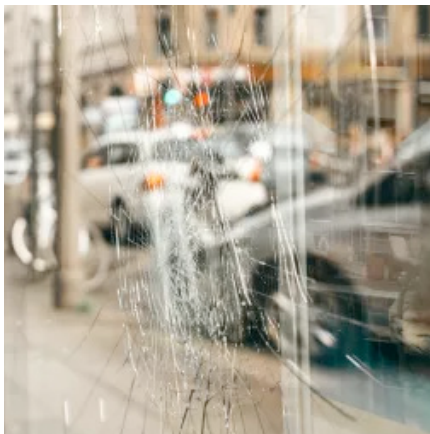




## CLEAR 4 C

Clear 4 C films help secure your windows by ensuring that the glass does not shatter, remaining transparent and retaining its overall integrity in the event of an impact, explosion or fire. Comply with European Standard EN 12600.



Fire-resistance rating  
**M1**



Storage from -5°C to +40°C  
**3 YEARS**



European Standard EN 12600  
**2B2**



REACH RoHS compliant  
**RESPECTED**

### TECHNICAL DATA

Data calculated based on film applied to clear glass 3 mm thick (\* on double glazing 4-16-4)

Ultraviolet transmission	5%
Visible light transmission	90%
Reflection of external visible light	7%
Reflection of internal visible light	4%
Total solar energy rejected	16%
Total solar energy rejected 2 *	17%
Solar ratio:	
Solar energy reflection	9%
Solar energy absorption	8%
Solar energy transmission	83%
Reduction in Solar Glare	8%
g-value	0.83
u-value	5.7
Shading coefficient	0.9
Tensile strength (kg/cm <sup>2</sup> )	28
Elongation at break	125%
Installation type	Interior
Roll length	30,5 m
Film composition	PET
Thickness	125 µ
Colour from the outside	Transparent

### MAINTENANCE

Use soapy water solution for cleaning. Do not clean for at least a month after installation and do not apply any type of stickers or adhesive on the film. For more information read our maintenance instructions and quality standards on our website, [www.solfilm.se](http://www.solfilm.se)

### INSTALLATION ADVICE

Vertical installation and on standard glass surface \*

Clear single pane	✓
Tinted single pane	✓
Reflective tinted single pane	✓
Clear double pane	✓
Tinted double pane	✓
Reflective tinted double pane	✓
Gas-filled double pane - Low E	✓
STADIP EXT. clear double pane	✓
STADIP INT. clear double pane	✓

✓ Yes ! Caution ✗ Not

*Recommended*

\* Recommendations provided on the basis of a glazed surface covering up to 2.5 m<sup>2</sup>.

### CONSTRUCTION

1. Hard scratch resistant layer, for durability and ease of maintenance during window cleaning
2. High optical quality polyester
3. Reinforced PS adhesive to accompany the elasticity of the film in case of impact, glass polymerization within 30 days
4. Protection release liner, disposable after installation

